

RcsB Does Not Have a Temperature-Dependent Protective Role for *Escherichia coli* K-12 Against T7 Bacteriophage Lysis

Sunny Chen, Sophie Guo, Tiffany Leung, Gurkiran Parmar

Department of Microbiology and Immunology, University of British Columbia, Vancouver, British Columbia, Canada

SUPPLEMENTAL MATERIAL

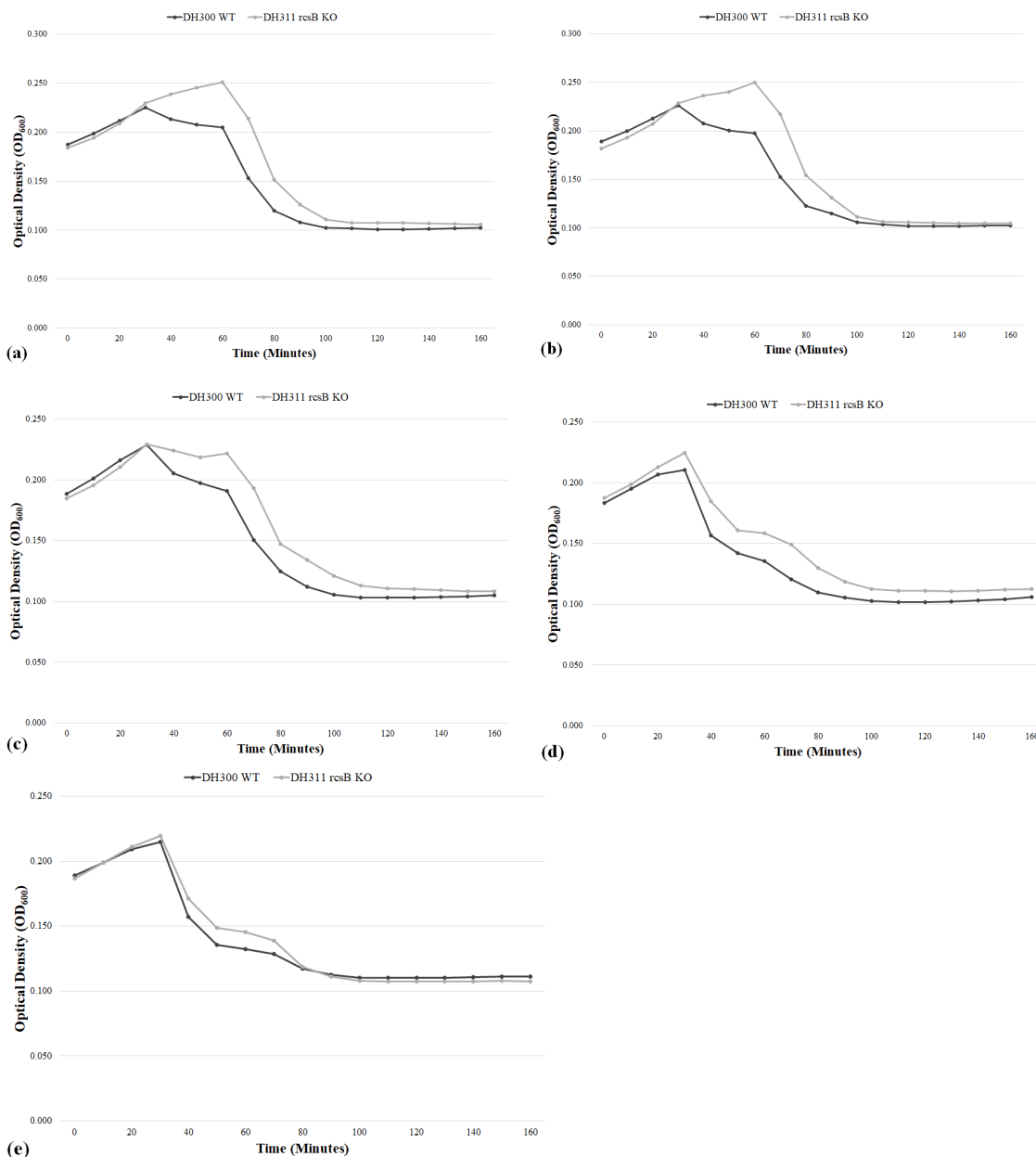


FIG. S1 Optimization of Multiplicity of Infection (MOI) for T7 Infectivity Lysis Curves. Cultures were infected with T7 bacteriophage at 30°C with various MOIs, (a) 0.1, (b) 0.5, (c) 1, (d) 5, (e) 10. Black curve indicates DH300 (WT) and light grey curve indicates DH311 (*rcsB* KO).