

Sub-minimum Inhibitory Concentration of Streptomycin and Cephaloridine-Induced Capsular Polysaccharide Production in *Escherichia coli* K-12 Increases Biofilm Formation in a Wzy-transporter Dependent Manner

Tanya Dhanoa, Wylie Li, Katherine Thomas, Bing Wu
Department of Microbiology and Immunology, University of British Columbia

SUPPLEMENTAL MATERIAL

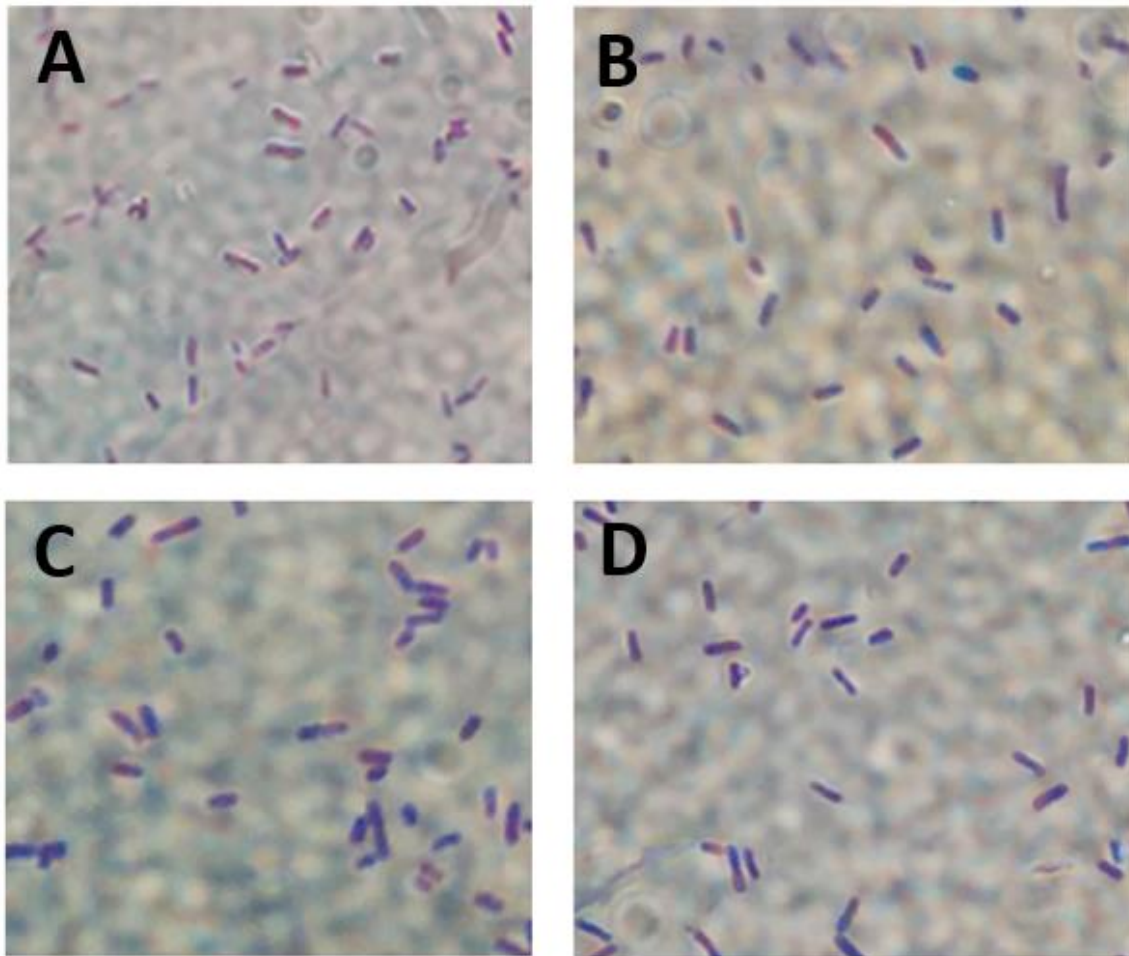


FIG S1 Anthony's capsule stain of *E. coli* strains. Strains were grown at 21°C for 24 hours and visualization was done with a light microscope at 100x oil immersion. (A) WT *E. coli* grown in LB (B) WT *E. coli* grown in sub-MIC streptomycin (C) Δwza mutant grown in LB (D) Δwza mutant grown in sub-MIC streptomycin.

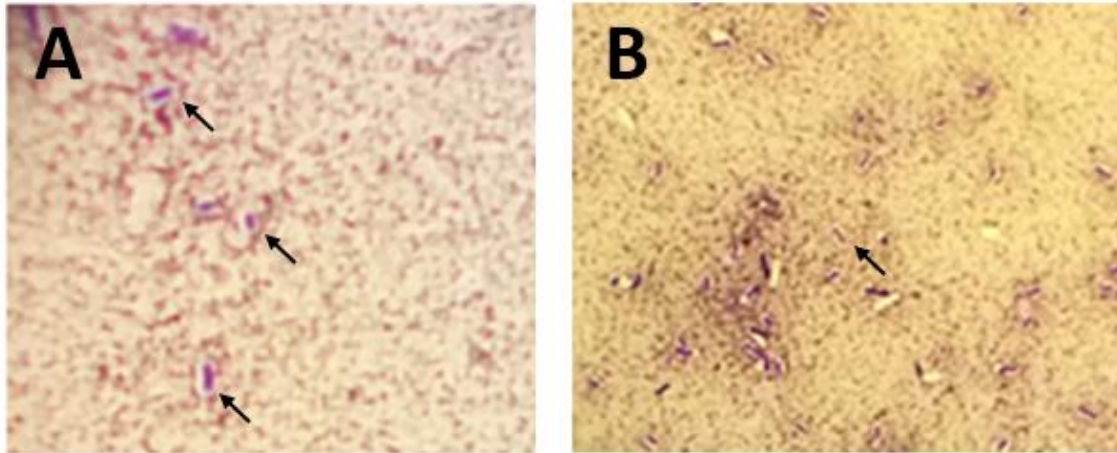


FIG S2 Modified Gin's capsule stain of *E. coli* strains. Strains were grown at 21°C for 24 hours stained and visualization was done with a light microscope at 100x oil immersion. (A) WT *E. coli* grown in sub-MIC streptomycin (B) Δwza mutant grown in sub-MIC streptomycin. The black arrows point to bacteria surrounded by a white halo.