

Escherichia coli Nissle 1917 forms biofilm and outgrows *Escherichia coli* K12 in a temperature-dependent manner

Jaspreet Gill, Karen Lau, Tina Lee, Hasel Lucas

Department of Microbiology and Immunology, University of British Columbia, Vancouver,
British Columbia, Canada

SUPPLEMENTAL MATERIAL

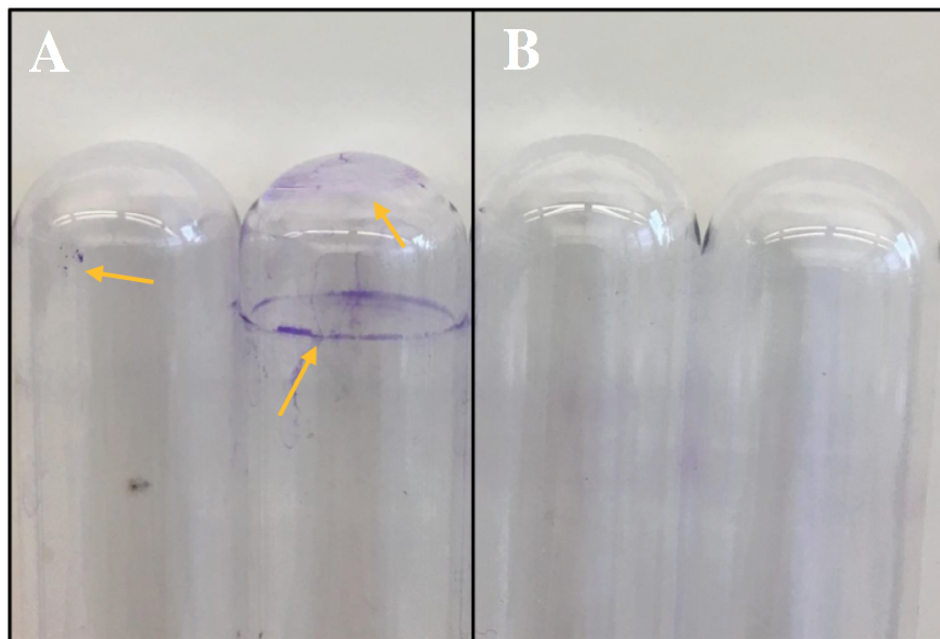


FIG. S1 Crystal violet stain observed on used (A) vs new empty tubes (B). Yellow arrows indicate the presence and location of crystal violet stain on used empty tubes. A preliminary screening of crystal violet stain on empty tubes was performed. Used and newly-opened empty tubes were stained with 0.1% crystal violet solution.